



14 Queens Avenue, Douglas, Isle of Man, IM1 4DA
Asking Price £640,000

- Beautifully refurbished period townhouse in sought-after Upper West Douglas
- Stunning family room with ceiling lantern opening onto the rear terrace
- Approx. 3,057 sq.ft of elegant accommodation arranged over five floors
- Luxurious principal bedroom suite with walk-in wardrobe and en-suite
- Rare and substantial double garage — a true standout feature for the area
- Large recreation room offering excellent versatility for entertaining, cinema or gym use



Situated in the highly sought-after Upper West Douglas area, 14 Queens Avenue is a beautifully refurbished period townhouse offering over 3,000 sq.ft of elegant accommodation arranged across five floors. Blending timeless character with stylish modern finishes, this impressive home provides generous and versatile living space for modern family life.

The property features a stunning bay-fronted living room, separate dining room and a beautifully appointed kitchen which flows seamlessly into the spectacular rear family room extension. Flooded with natural light from a striking ceiling lantern, this impressive space opens directly onto the elevated rear terrace, creating the perfect setting for entertaining and everyday living.

The bedroom accommodation is arranged across the upper floors and includes a luxurious principal suite occupying its own floor, complete with walk-in wardrobe and en-suite bathroom. Three further bedrooms and additional bathroom facilities provide excellent flexibility for families, guests or home working.

To the lower ground floor, a substantial recreation room offers a versatile space suitable for a cinema room, gym, games room or additional lounge. A utility room, laundry area and useful storage further enhance the practicality of the home.

A particularly rare feature is the substantial double garage, providing secure parking and storage, while the property's position within one of Douglas' most desirable residential locations places schools, amenities and the promenade within easy reach.

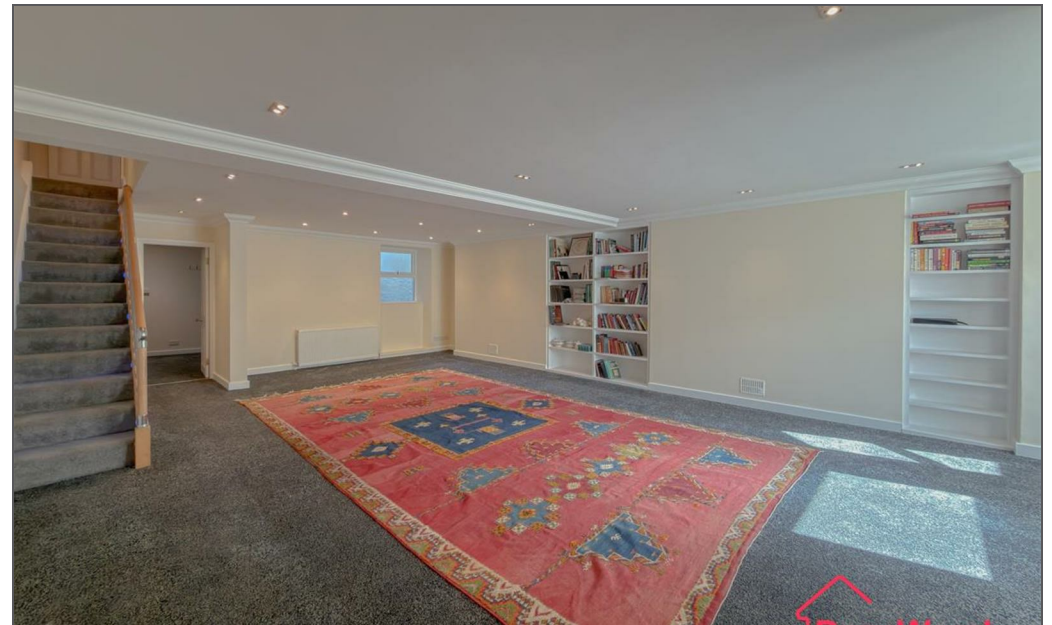
Combining period elegance, modern comfort and exceptional living space, 14 Queens Avenue represents a superb turnkey family home in the heart of Douglas.













14 Queens Avenue, Douglas, Isle of Man, IM1 4DA





TOTAL: 3057 sq. ft

Ground floor: 710 sq. ft, 1st floor: 969 sq. ft, 2nd floor: 333 sq. ft, 3rd floor: 518 sq. ft, 4th floor: 527 sq. ft
 EXCLUDED AREAS: UTILITY: 33 sq. ft, ROOM: 98 sq. ft, GARAGE: 396 sq. ft,
 BALCONY: 155 sq. ft, PORCH: 26 sq. ft, LOW CEILING: 18 sq. ft,
 WALLS: 252 sq. ft

Floor Plan Created By Cubicasa App. Measurements Deemed Highly Reliable But Not Guaranteed.



DOUGLAS

37 VICTORIA STREET
 DOUGLAS
 ISLE OF MAN IM1 2LF

T 01624 620606
 F 01624 677363
 E info@deanwood.co.im

CASTLETOWN

COMPTON HOUSE
 9 CASTLE STREET CASTLETOWN
 ISLE OF MAN IM9 1LF

T 01624 825995
 F 01624 825996
 E castletown@deanwood.co.im

RAMSEY

LEZAYRE HOUSE
 87 PARLIAMENT STREET
 RAMSEY ISLE OF MAN IM8 1AQ

T 01624 816111
 F 01624 816588
 E ramsey@deanwood.co.im

These particulars are for information purposes only. They do not constitute or form any contract nor should any statement contained herein be relied upon as a representation of fact. Neither the vendor nor DeanWood Agencies Limited ('the firm'), nor any officer or employee of the firm accept liability or responsibility for any statement contained herein. The vendor does not by these particulars, nor does the firm, nor does any officer or any employee of the firm have any authority to make or give any representation or warranty whatsoever as regards the property or otherwise. It is the sole responsibility of any person interested in the property described in these particulars to make all proper enquiries and searches to verify the description of the property and all other particulars herein.

FOR MORE PROPERTIES VISIT OUR WEBSITE @ deanwood.im